



**MAKING  
TRANSI  
TIONS  
LESS  
AWK  
ARD**

**MARCH 2021**





# *Transitions are like the month of March*

Here in Southern California, it's not quite warm enough to pack away the sweaters but lately the high temps of 68 degrees make it impossible to wear the same outfit all day.

So layer it is...and by the time it reaches 6pm we're back to doning our winter wear.

**AND IT FEELS SO AWKWARD!**

Songs can be the same way. The verse starts off soft and airy and by the time you get to the bridge you're pulling out all of the stops. To create the perfect dynamic these songs require careful transitions.

This balance isn't hard to achieve when you know the right techniques.

Once you learn these techniques it will drastically change the way your songs sound.

The movement and emotion it creates will help lead your congregation right to the throne of God. And that's the goal, right?!

Here's to making sure the words awkward and transitions never go in the same sentence again!

# MARCH PIANO COACHING

print this for your fridge

**02**

**Making Transitions  
Less Awkward  
Piano Lesson -  
PRE-RECORDED**

**09**

**Transitions that Have  
you Stuck Q+A**

**18**

**Accountability Group  
Coaching Call -  
THURSDAY 5PM PST**

**23**

**1 Minute Video Group  
Assessments**

**30**

**BONUS CLASS  
Songs with Awkward  
Transitions Group  
Coaching Call**



**CLASSES ARE ON TUESDAY AT 10AM PST UNLESS OTHERWISE NOTED!**

# Action Plan

MARCH 2021



## *Winners each month!*

When you attend class live you'll be eligible to receive a one-on-one session with Melody. 1 winner will be chosen after each LIVE lesson.

## THE DOER

Use 1 building technique taught in this month's lesson in a song you already play.

## THE ACHIEVER

Learn this month's song

## THE RISK-TAKER

Learn this month's song and also use the building techniques taught in this month's lesson in a song you already play.

**Not sure where to start?**  
**TAKE THE PLACEMENT QUIZ**



The background of the image is a soft-focus photograph of numerous small, light purple flowers, possibly lavender, growing on green stems. The lighting is bright and diffused, creating a gentle, ethereal atmosphere. The text is overlaid on this background in a bold, magenta color.

**HOW YOU  
HANDLE  
TRANSITIONS  
CAN HELP OR  
HURT A  
SERVICE.**

# HOW TO TRANSITION



## OPTION 1

Play nothing - leaving space helps the song breathe

## OPTION 2

Use a Chord Fill

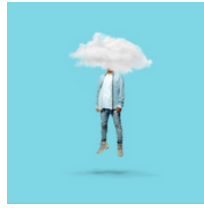
## VAMP

Use a 1 finger or octave fill

## OPTION 4

Building with volume

# FAMOUS FOR TAUREN WELLS



Key of Bb // 4/4

[CLICK HERE TO LISTEN](#)

**BPM:86BPM**

[IF YOU PREFER TO PRACTICE WITH A LOOP](#)

## INTRO / VERSES

| 4 6m | 5 |

*last line of Verse | 4 | 4 |*

*Verse 3 is | 4 | 5 |*

## CHORUS

| 4 5 | 6m 5 |

## VAMP

| 4 | 5 |

## BRIDGE

| 6m 4 | 1 5 |